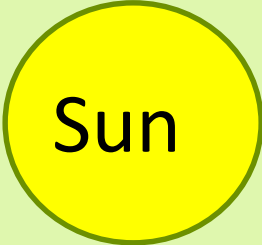


**ASTATE HORTICULTURE
PROGRAM SPRING 2019 PLANT
SALE**

Thur 5/2 11:00am – 2:00pm

Annuals

Angelonia - (Purple, Pink, light Purple, White) Summer Snapdragon



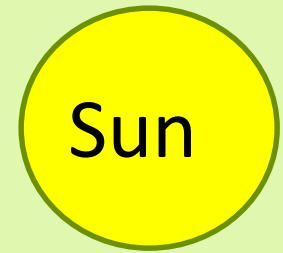
- Flowers all summer
- Heat tolerant
- 12"-18" tall
- 12"-15" wide



Dr. Pittcock Favorite!!

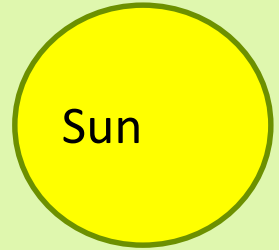
Evolvulus glomeratus

-Blue Daze



- Blue flower
- 6" tall
- 12" wide

Coleus – (Sun)



- Annual
- Multi-colored foliage
- 12"-24" tall
 - (pinch off flowers)

Multiple cultivars available

Coleus – 'Wizard mix' (Shade)

Partial
Shade

Shade



- Annual
- Multi-colored foliage
- 12' tall
 - (pinch off flowers)

Dahlia 'Figaro Mix'

Sun



- Dwarf dahlia
- Full sun
- 12-14" tall

Dusty Miller

Sun



- White foliage
- 12-14" tall

Geranium 'Pinto Red'

Partial
Shade



- Annual
- 5-6" red flower heads
- Partial shade
(morning sun only)
- 12" tall plants

Gomphrena 'Las Vegas Purple'

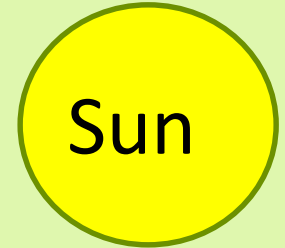
Sun

Blooms from early
summer - late summer

18" tall, 18-24" wide



Lantana ('New Gold', Red/Yellow)



New Gold



red & yellow



- Full sun
- Ht 6"-24"
- Tough plant
- Will tolerate drought when established
- **Butterflies love!!**

Melampodium 'Derby'

Sun

Partial
Shade



- 8" tall plants, 8" wide
- Creamy yellow flower
- Flowers all summer

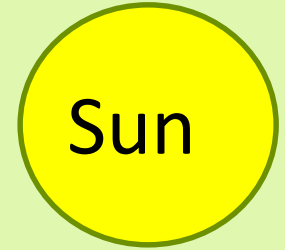
Mexican Heather

Sun



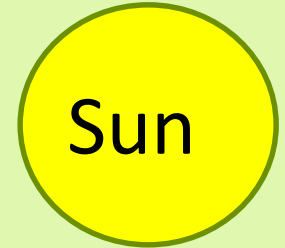
- Annual (semi-perennial)
- Purple 8"-12" tall
- 12-18" wide

Nicotiana 'Sarasota Mix'
Flowering Tobacco



- 8"-12" tall, 8" wide
- Good for hot, dry sites
- Flowers all summer

Ornamental Peppers – ('Black Olive', 'Chilly Chili')



'Black Olive'



'Chilly Chili'



- Loves hot and dry
- Round - oblong fruits when mature Multicolored fruits when
- Purple to yellow/red on mature plants
Mature 8-15" tall plant

Oleander (Red)

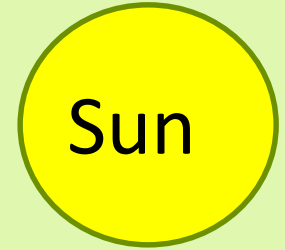
Sun



- Loves hot and dry
- 8-15' tall plant
- ANNUAL

Petunia - ('Dolcissima Flambe', 'Wave Lavender',)

- flowers, 2-3"
- Ht 4", spread 2+'

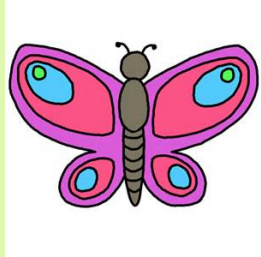
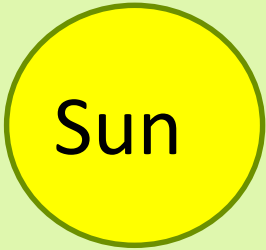


Dol.Flambo



Lavender

Porterweed (Blue, Red, Purple, Coral)



Red

Blue



Purple



Coral

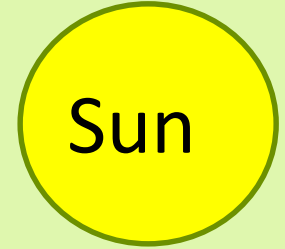
Dwf red= 12" tall
Others 24" -48" tall

Portulaca –('Happy Trails', 'Coconut') Moss Rose



Happy Trails

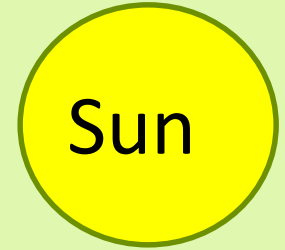
- Full sun
- 4" tall, 12" wide
- 2" flowers, mixed colors
- Loves hot and dry sites



Coconut



Mexican Petunia (Purple, Pink, White)



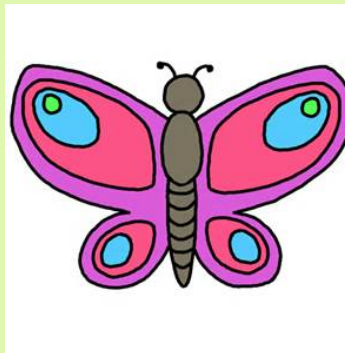
- Full sun
- 4" tall, 12" wide
- 2" flowers, mixed colors
- Loves hot and dry sites

Penta (Red)

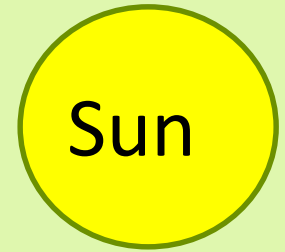
Sun



- Red flower
- 12"-30" tall
- 1-2' wide
- Low Maintenance



Salvia - 'Wendy's Wish'



- 12-14" tall
- Summer Flowers
- **Hummingbirds and butterflies love it**



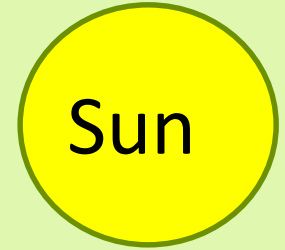
SunPatiens- (Red,White)



Partial
Shade

- Annual
- partial shade
- 18-36" tall, 24-36" wide
- Heat/humidity tolerant
- No downy mildew

Sweet Potato Vines- ('Margarita', 'Red Bronze', 'Blackie')



- 'Chartreuse' = green
- 'Red Bronze' = rusty purple
- 'Blackie' = purple
- Grows to at least 5'x5' area



Torenia (blue/White)

Shade



- Late Spring – Summer bloomer
- 8" tall and wide
- Hummingbirds Love

Zinnia

Sun



Dreamland



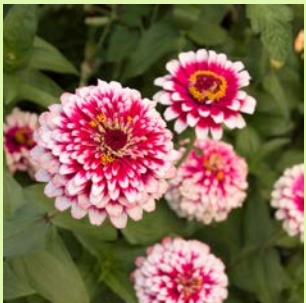
Sunrise mix



Double White



Zinderella



Hidden Dragon



Magellan Mix



Crystal Mix

- 'Magellan Mix'
- 'Purple Zinderella'
- 'Sunrise Mix'
- 'Hidden Dragon'
- Dreamland Red'
- 'Crystal' Mix
- Double White

Butterflies love!!

Ornamental Grass

Purple Fountain Grass



- Full sun
- Purple leaves
- Purple flower plumes
- 3-5' tall
- Annual

Sun

'Fast Forward' Purple Muhly grass



- Full sun
- Purple leaves
- Purple flower plumes in July (early than the standard)
- 2-3' tall
- Perennial

Sun

Herbs

- Thyme (English)
- Parsley
- Oregano
- Cilantro
- Basil
- Dill



Hanging Baskets

- Bolivian Jew
- Spider plants (green and variegated)
- Pothos
- Heartleaf Philodendron
- Geranium Ivy (Tornado Hybrid)
- Wandering Jews (Silver & Purple)



Bolivian jew

Bridal wreath



**Geranium
'Tornado Hyb'**



Silver Wandering jew

Tropicals

- Succulents
- Rex Begonias,
- Misc

Perennials

Buddleia davidii

Butterfly Bush - 'White Bouquet', 'Honeycomb'



Honeycomb

Sun

- 5-6 tall
- Butterfly magnet!!

Perennial



White Bouquet



Geum 'Mrs. Bradshaw'



Serena Mix

Sun

- Flowers all summer
- Heat tolerant
- 12"-18" tall
- 12"-15" wide

Dr. Pittcock Favorite!!

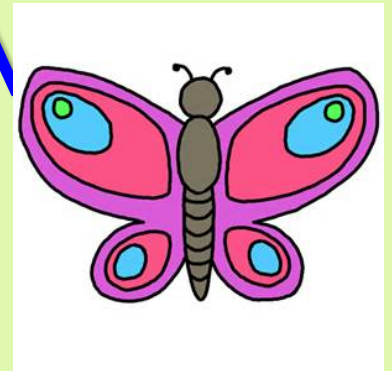
Leucanthemum - 'Snow Lady' Shasta Daisy

Sun



- Yellow flower
- 15"-18" tall
- Bloom: early to late summer

Perennial



Wormwood

Sun



- Aromatic foliage
- 12"- 24" tall

Perennial